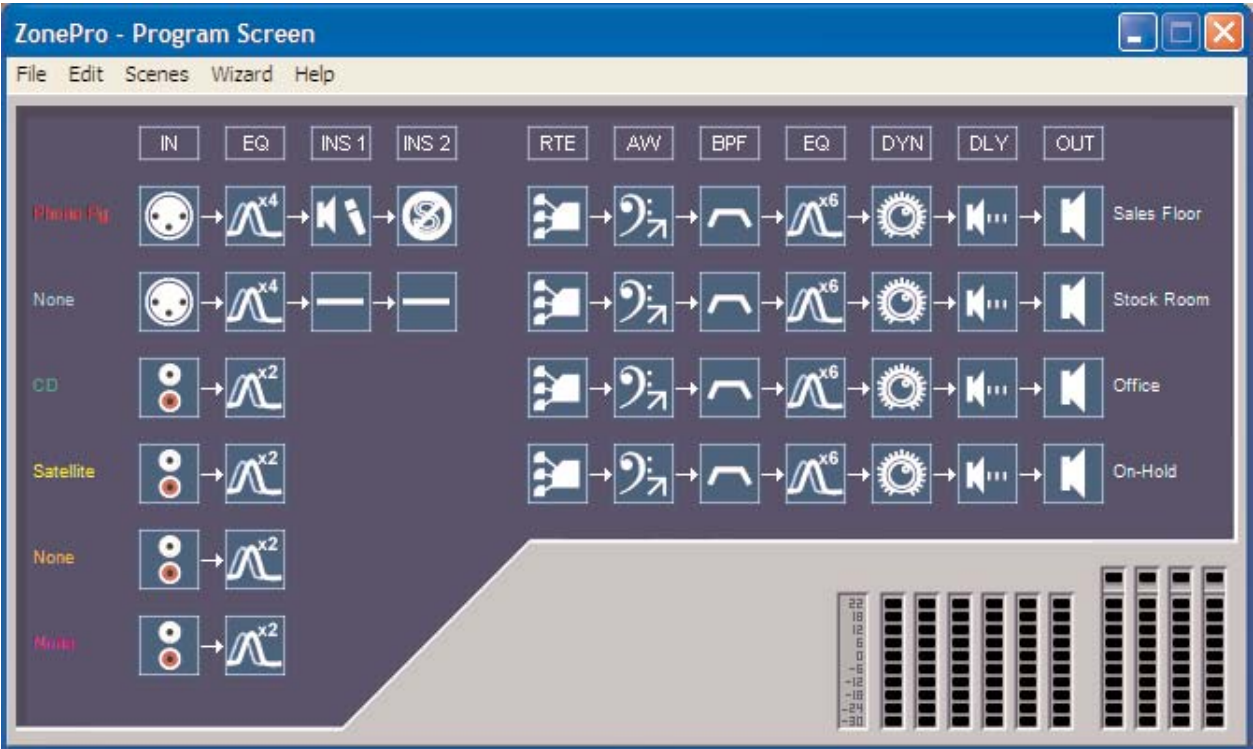
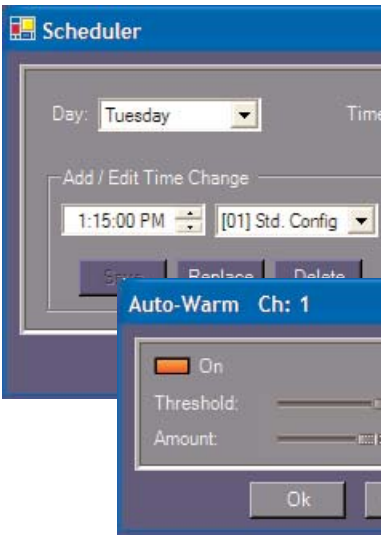
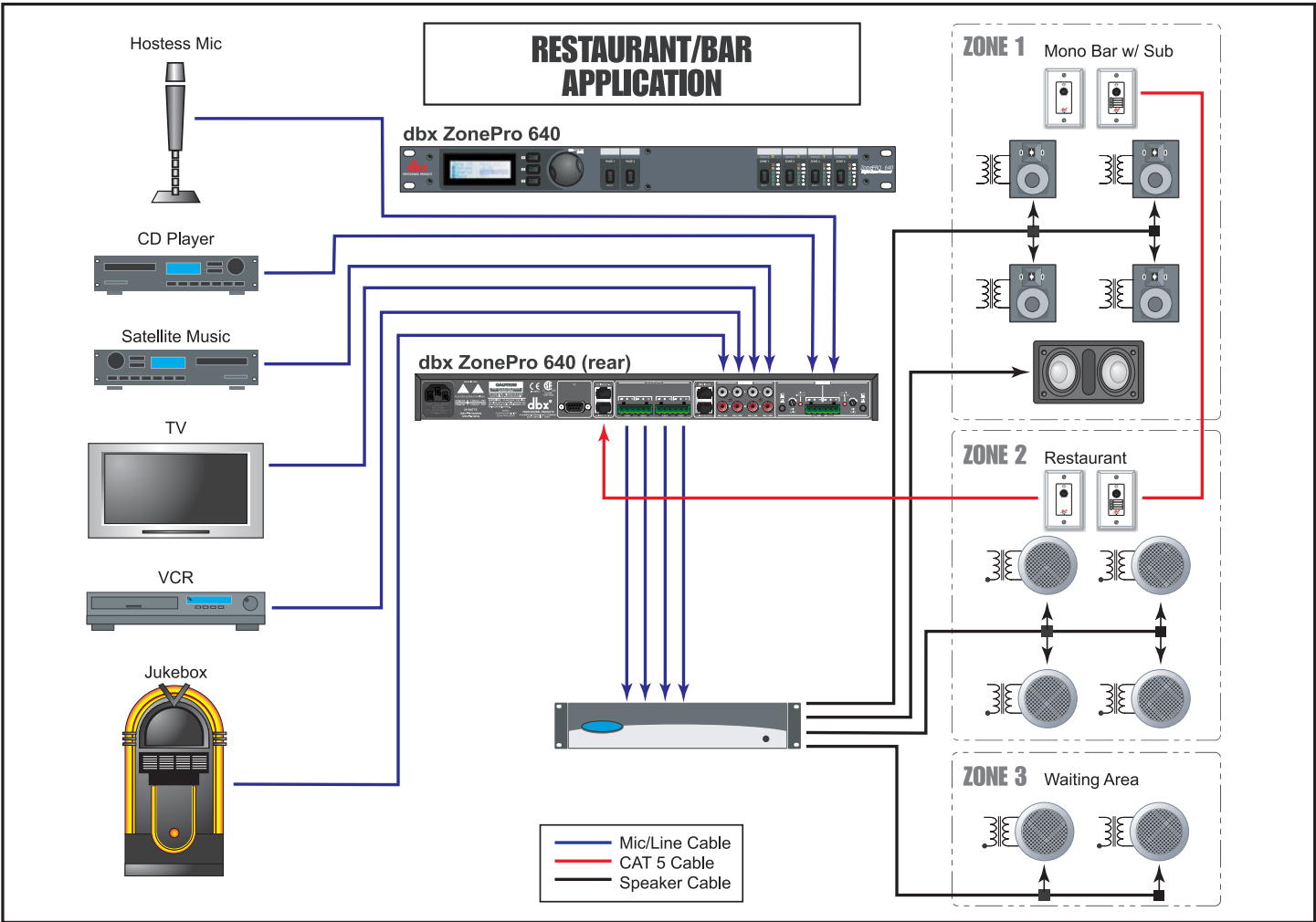


## Notes - Retail

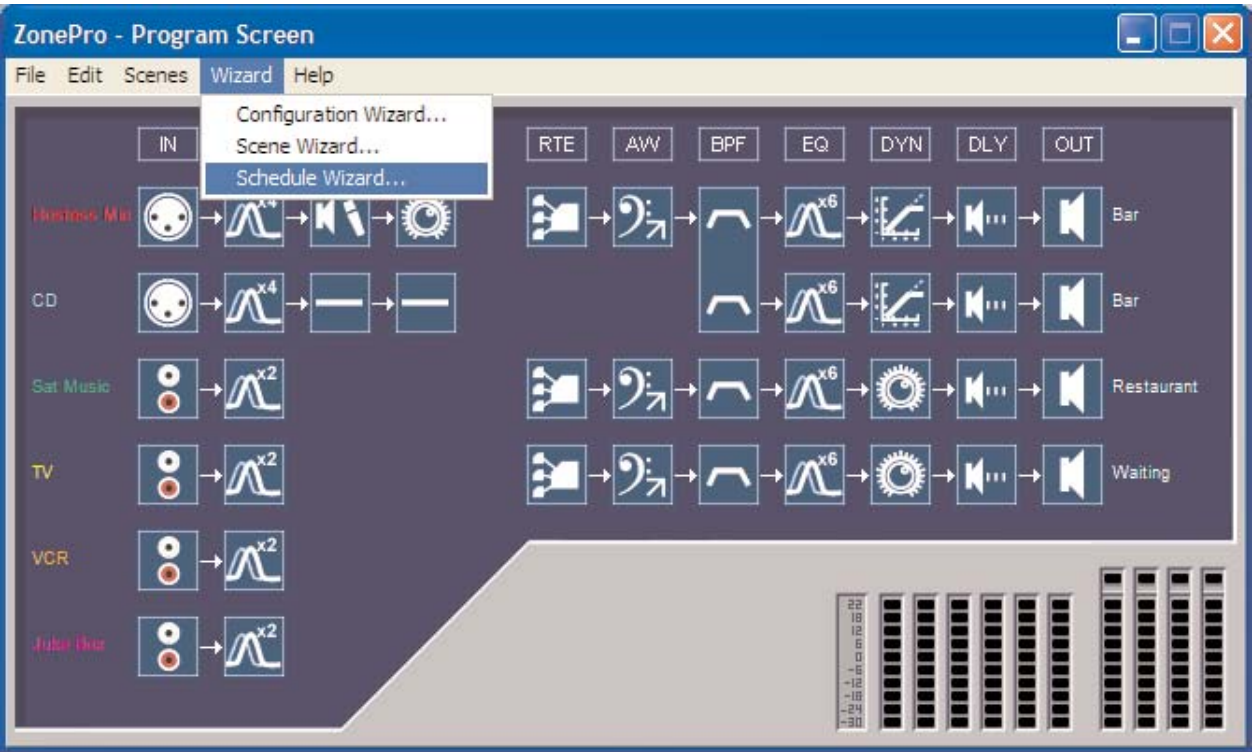
1. The configuration is set to send music to each zone except the Music On-Hold zone.
2. All paging is done from the Phone Paging interface, and the Music On-Hold zone is the stock room, and the Music On-Hold zone is the front panel of the ZonePro 640.
3. The Zone Controllers are set to be used as ID #1, and ZC-1 (Voice Control).
4. EQ, Feedback Suppressor, and Auto Gain Control are used to improve intelligibility and reduce feedback.
5. The Bandpass Filters are used to filter the speakers so their efficiency is improved.
6. EQ is used in all zones except the Music On-Hold zone.
7. Auto Gain Control is used in all zones except the Music On-Hold zone.

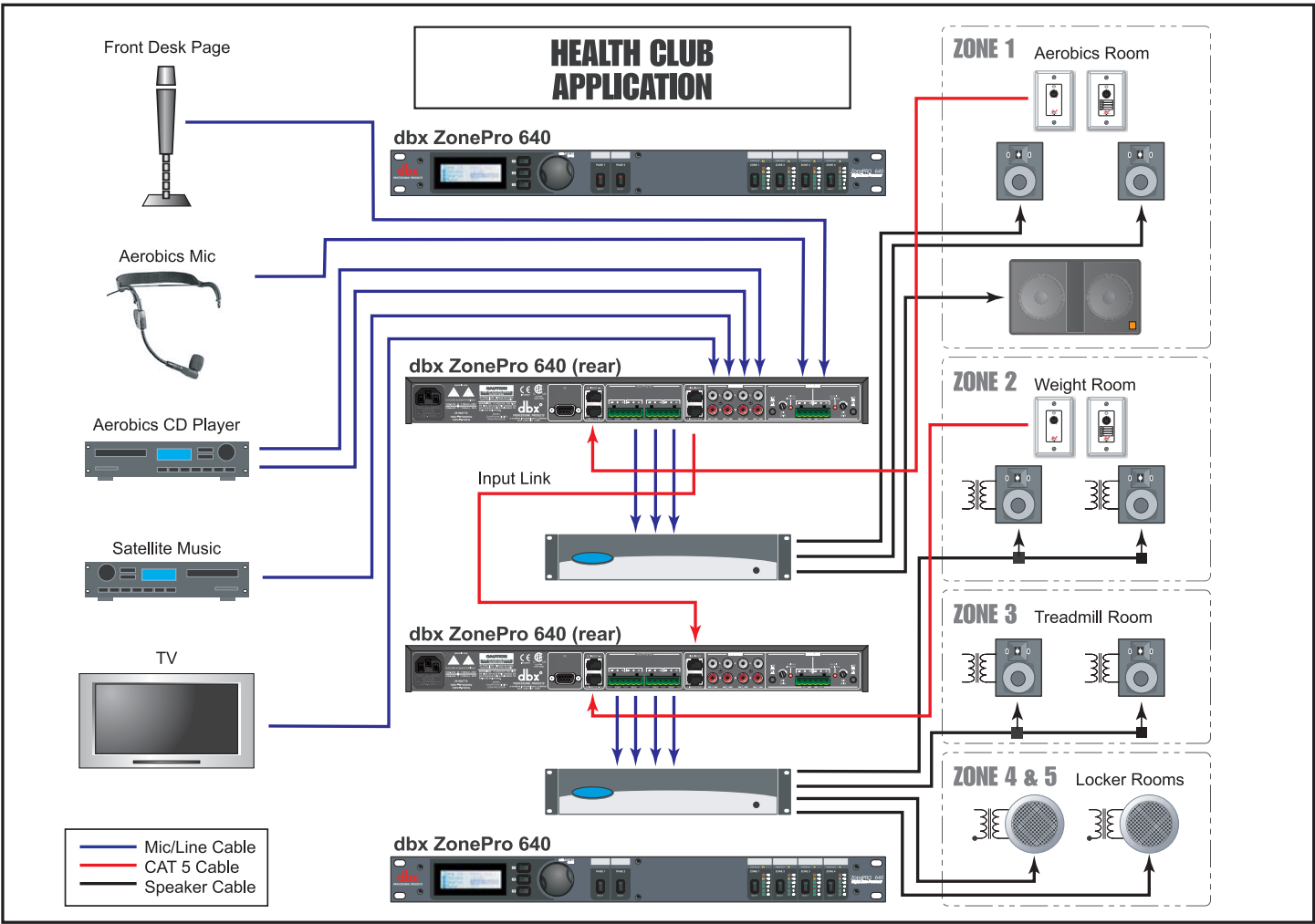




## Notes - Restaurant/Bar

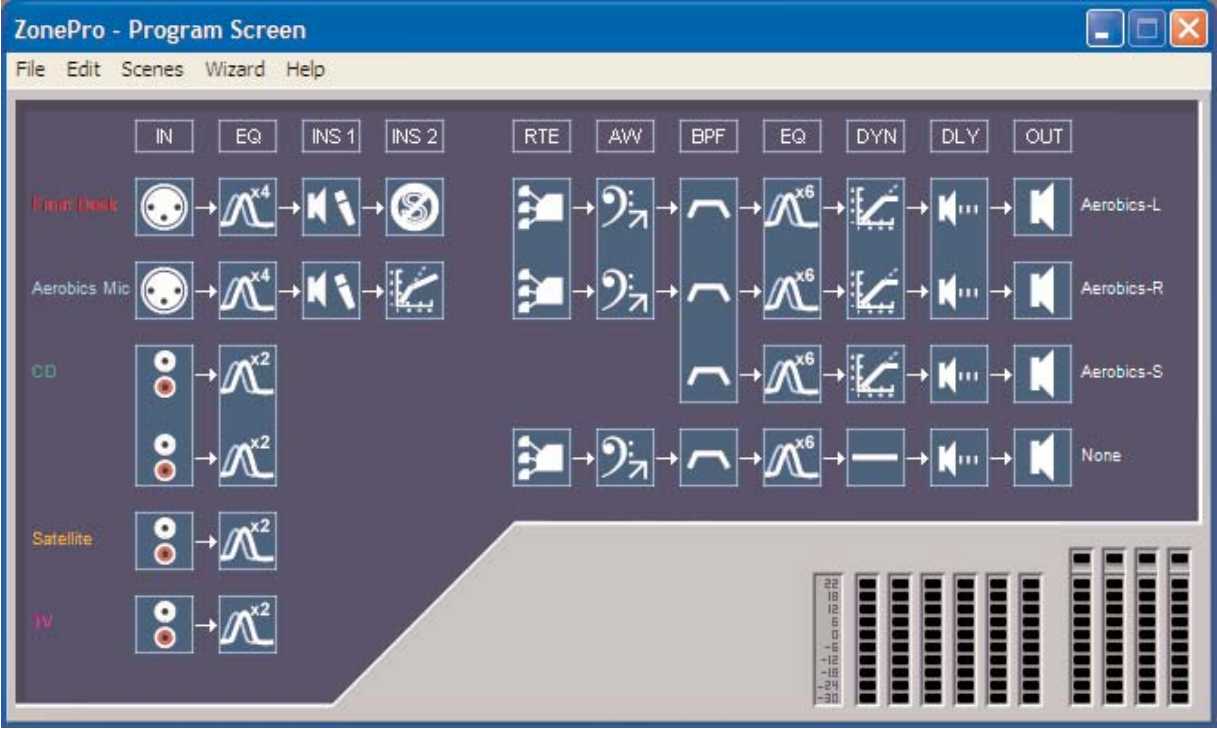
1. The ZonePro 640 is located in the bar area.
2. Both the restaurant and bar have their own source selection and control, and the ZC-3 is used for paging.
3. Paging is done from the bar area.
4. The Zone Controllers are used for the bar ZC-3 and ZC-1 #4.
5. Scenes have been created in the bar for happy hour, lunch time rush and the evening rush.
6. The ZC-3 in the restaurant is used for paging.
7. The Schedule function is used for the beginning of the lunch rush.
8. EQ, Feedback Suppressor, and AutoWarmth are used to improve intelligibility and reduce feedback.
9. Limiting is used in the bar to prevent clipping.
10. AutoWarmth® is engaged to prevent signal level drops, while Auto Gate is used to maintain the signal level during quiet periods.
11. EQ is used in all zones to tailor the sound to the environment.



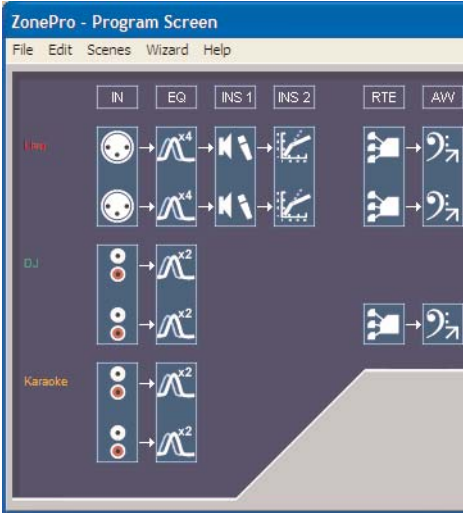
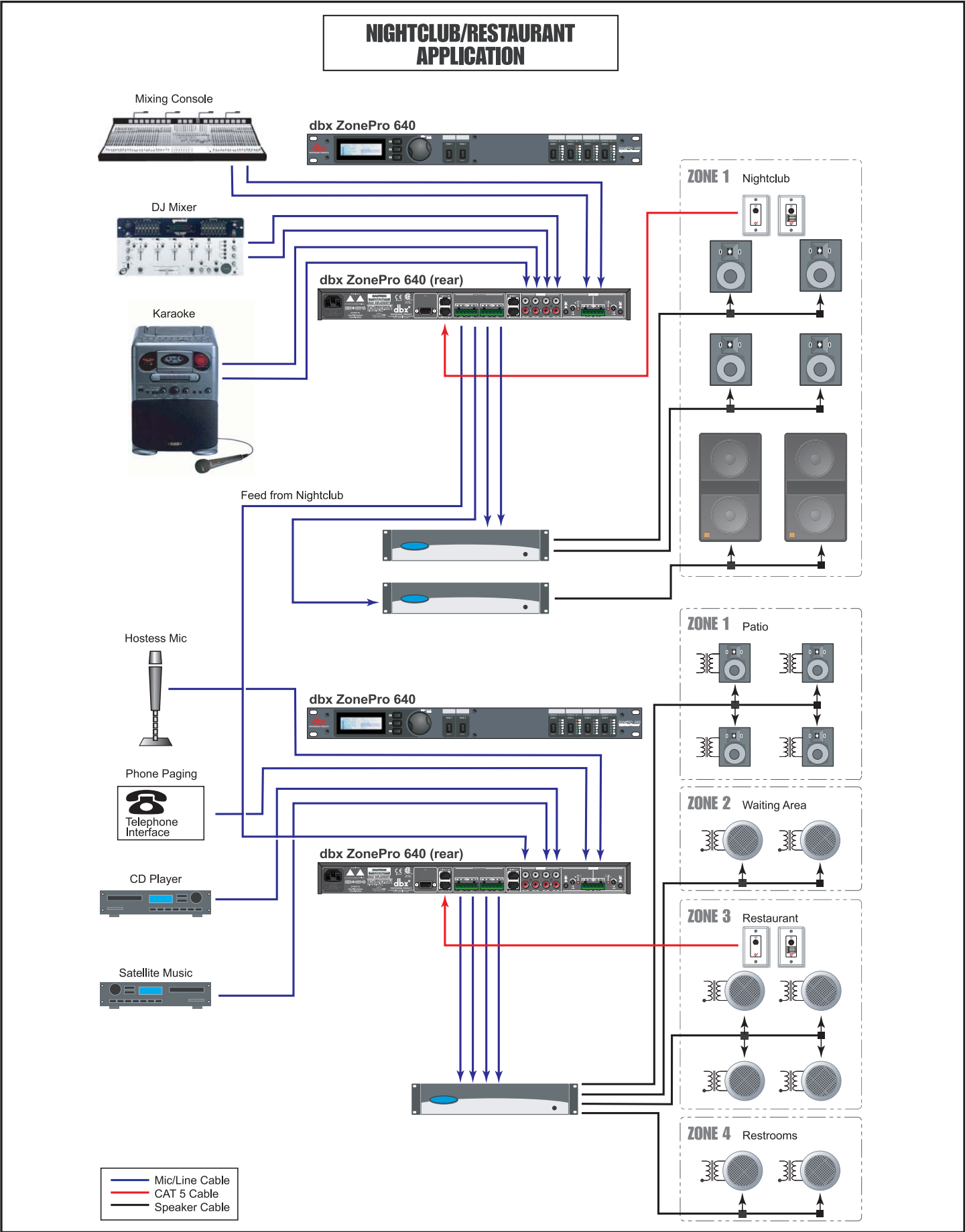


## Notes - Health Club Application

1. The ZonePro 640 unit is configured for the Health Club Application.
2. ZCs in the weight room are used for zone control.
3. The aerobics instructor's microphone is the primary source and is simply monitored by the ZonePro 640 unit.
4. The Input Link Buss is used to connect the ZonePro 640 unit to the ZonePro 640I unit.
5. The TV feed comes from the ZonePro 640 unit, overriding the primary source in the ZonePro 640I unit.
6. The locker rooms always receive the same signal as the ZonePro 640 unit, overriding the primary source in the ZonePro 640I unit.
7. Since we do not need a separate ZonePro device to the ZonePro 640 unit, we can use the "ZonePro 640I Page" facility on each ZonePro 640I unit to control the ZonePro 640 unit coming in on the Buss. This is done by the second ZonePro 640I unit.







## Notes - Nightclub

1. The ZonePro 640 units are...
2. The ZCs in the nightclub are... control.
3. The feed from the nightclub... allowing it to be sent to the...
4. Output Delay is used to de... time as the acoustic signal...
5. The zone controllers in the... restaurant area.

